



Beaufort County
Public Works
Stormwater Infrastructure
Project Summary

Project Summary: Ladys Island Tree Removal - S. Point Trail

Activity: Routine/Preventive Maintenance

Narrative Description of Project:

Removed fallen trees from workshelf.

Duration: 1/4/17

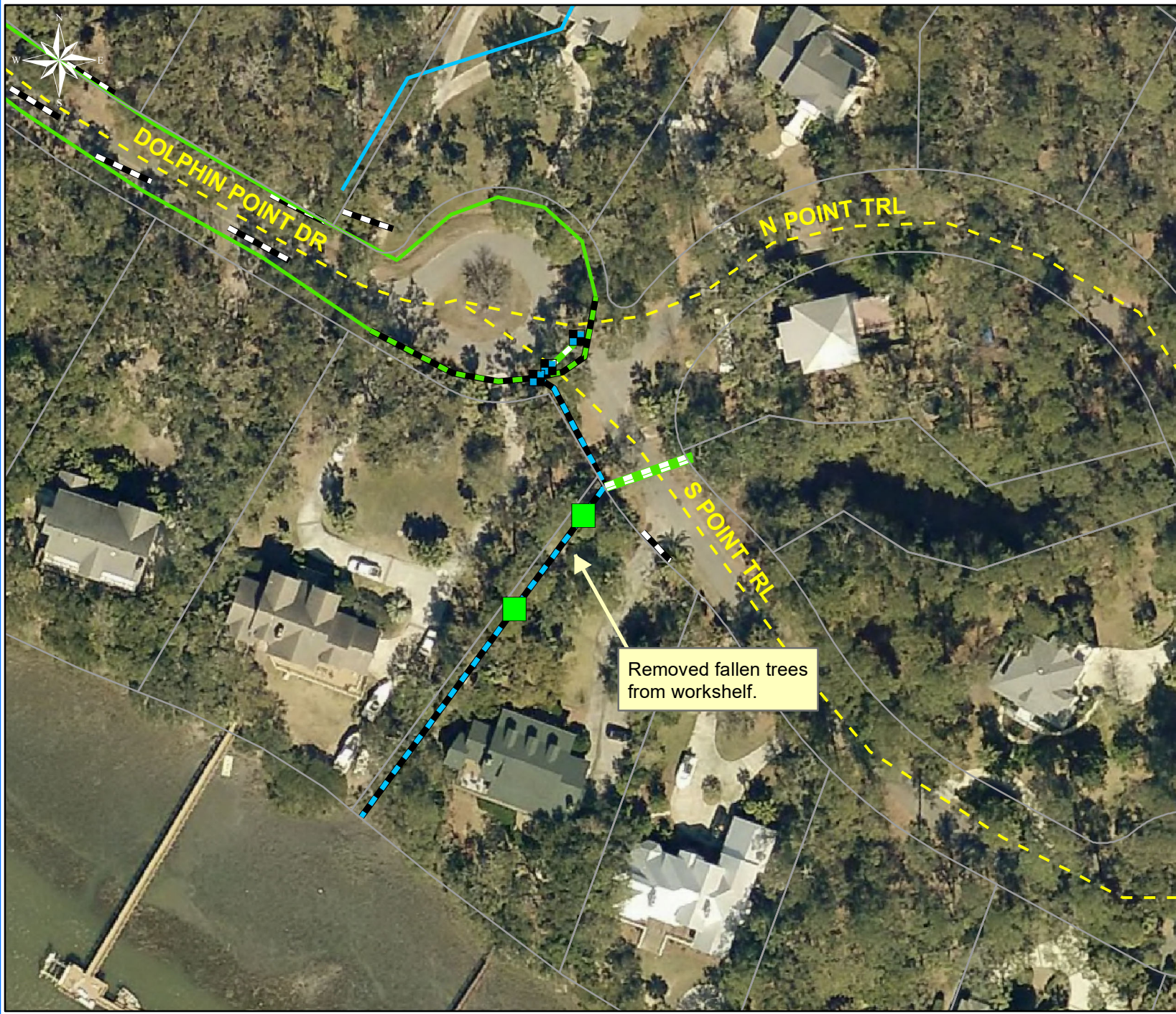
2017-317 / Ladys Island Tree Removal	Labor Hours	Labor Cost	Equipment Cost	Material Cost	Contractor Cost	Indirect Labor	Total Cost
AUDIT / Audit Project	0.5	\$11.75	\$0.00	\$0.00	\$0.00	\$6.62	\$18.36
HAUL / Hauling	3.0	\$66.81	\$28.26	\$66.80	\$0.00	\$43.26	\$205.13
RMTRW / Remove trees - Workshelf	9.0	\$218.67	\$39.43	\$5.46	\$0.00	\$126.21	\$389.77
2017-317 / Ladys Island Tree Removal Sub Total	12.5	\$297.23	\$67.69	\$72.26	\$0.00	\$176.09	\$613.26
Grand Total	12.5	\$297.23	\$67.69	\$72.26	\$0.00	\$176.09	\$613.26

Before



After





Project: Ladys Island Tree Removal - S. Point Trail

Activity: Routine/ Preventive Maintenance

Project #: 2017-317

Township/SW Dist: Ladys Island/7

Completed: January 2017

Legend	
Drainage Type	
	Access Pipe
	Bleeder Pipe
	Channel Pipe
	Channel
	Stream
	Crossline Pipe
	Driveway Pipe
	Lateral
	Lateral Pipe
	River
	Road Pipe
	Roadside
	Roadside Pipe



1 inch = 83 feet

Prepared By: BC Stormwater Management Utility
 Date Print: 11/01/17

File:C:\project summaries map\Ladys Island Tree Removal-S.Point Trail_2017-317